



Th. WORTELBOER B.V.

P.O BOX 5 - NL - 6580 AA MALDEN
HOLLAND

PHONE 31 - 24 - 358 65 14

FAX 31 - 24 - 358 70 79

www.wortelboer.ws

E-mail : info@wortelboer.ws

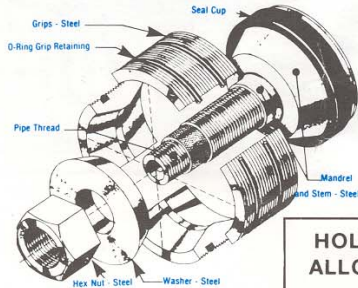
THAXTON, INC.

high-pressure pipe stoppers



Precision Machined Hardened Steel

SIZE 3" AND LARGER (Type "D")



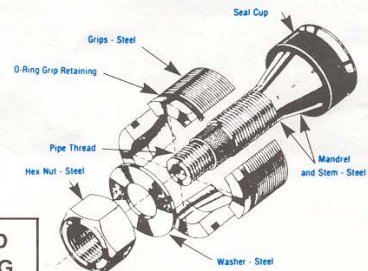
HOLLOW STEM AND PIPE THREAD
ALLOWS FOR FILLING OR VENTING

Standard Sizes 3" thru 12" SCH. 40 & SCH. 80 Stocked

SPECIAL SIZES

- Made to fit specific inside diameters with tolerances of plus or minus .035".
- Available in sizes as large as 30" I.D.

SIZE 2½" AND SMALLER (Type "D")



Standard Sizes 1" thru 2½" SCH. 40 & SCH. 80 Stocked

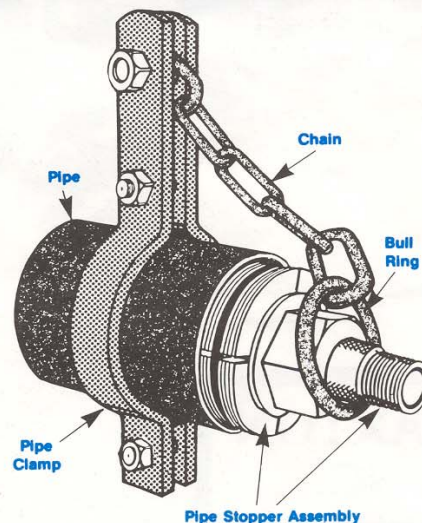
SPECIAL SIZES

- Made to fit specific inside diameters with tolerances of plus or minus .020".
- Available in sizes as small as 1" I.D.

Standard Pipe Stoppers are Factory Tested up to 3000 PSI depending on size. Special sizes and higher pressures can be supplied per customer requirements. Stoppers are held in place by the steel grips holding against the inside wall of the pipe when the nut is tightened. At the same time a neoprene seal cup is compressed to make a tight seal. New neoprene seals may be purchased directly from the factory, thus prolonging the useful life of a Thaxton Pipe Stopper almost indefinitely.

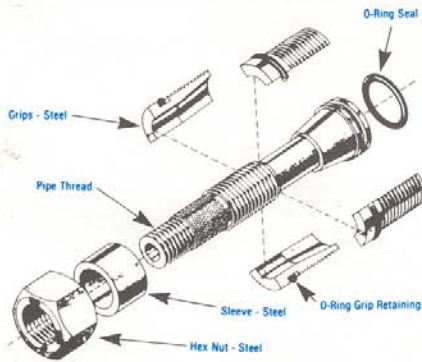
Safety Gag

The gag is to be installed after the pipe stopper is in place. The clamp is tightened on the pipe, with the bull ring located loosely over the stem. If the chain should tighten, this would signal the operator to reduce pressure and retighten the pipe stopper. The pipe clamp also serves to restrict expansion of the pipe.



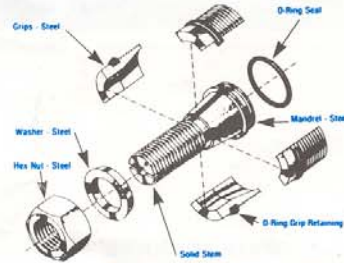
Zinc Plated, Factory Tested

TYPE "C" PIPE STOPPER



- Sizes .460" to 1" I.D. of tube.
- Hole in mandrel for filling or venting.
- Type "C" stoppers are specifically designed for piping or tubing having a smooth concentric inside diameter.

SOCKET WELD PLUG

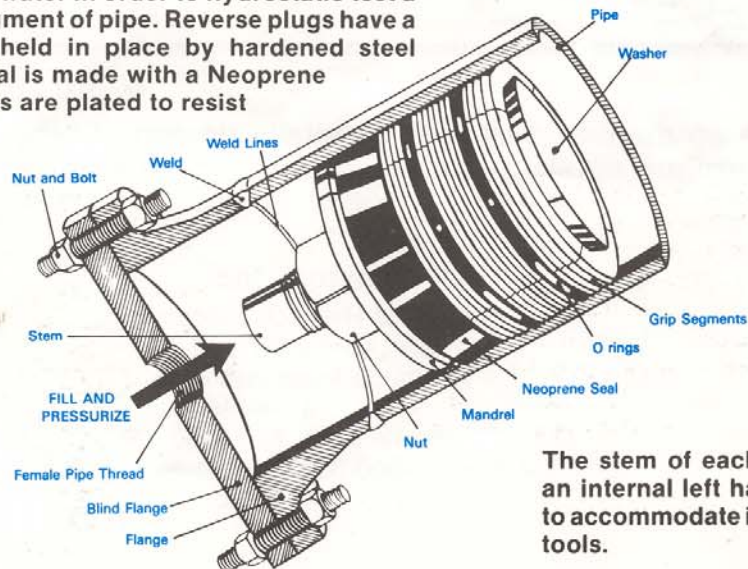


Standard Sizes 1/2", 3/4", 1", 1 1/4", 1 1/2", 2"

- Special sizes are available on request.
- Provisions for filling & venting thru the stem can be furnished when required.
- The socket weld plug shown above eliminates the need for welding plugs or nipples onto standard socket weld openings in order to conduct pressure tests.

THAXTON Reverse Pressure Plug

The Thaxton Reverse Pressure Plug permits testing in a relatively small section of pipe. This will avoid filling long sections of pipe with water in order to hydrostatic test a particular weld or segment of pipe. Reverse plugs have a solid stem and are held in place by hardened steel reverse grips. The seal is made with a Neoprene ring and all steel parts are plated to resist corrosion.

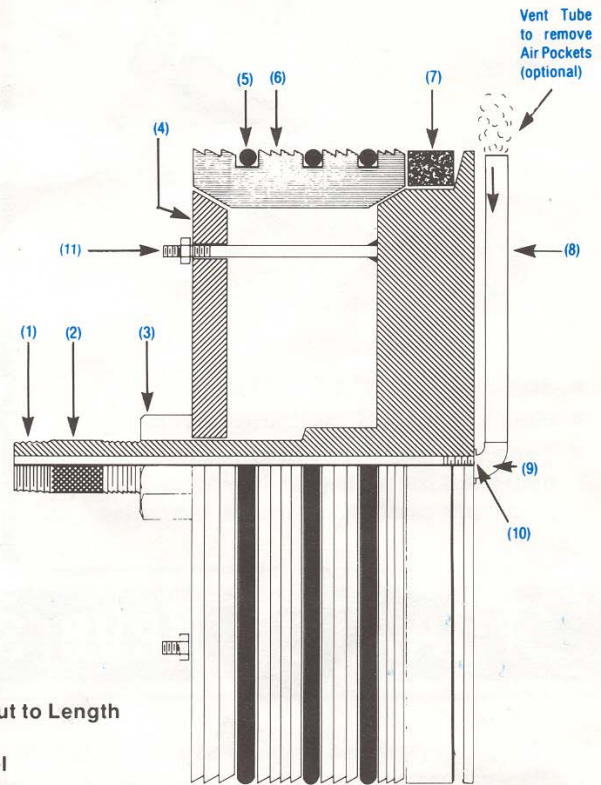


The stem of each plug has an internal left hand thread to accommodate installation tools.

Large Diameter Pipe Stopper With Studs And Vent Tube

PIPE SIZES 20" THRU 30" O.D.

Due to the weight and large size of the parts the stoppers are furnished with a circle of studs and nuts which protrude through the washer. This simplifies the installation and tightening of the stopper inside the pipe allowing the installer to expand the grip segments more evenly. This type of stopper is also equipped with a female pipe thread in the bottom of the mandrel which allows the customer to install a vent tube, by using a street ell and the appropriate length of pipe. The vent tube will help to remove pockets of air from the pipe when hydrostatic testing.



- | | |
|----------------------|---|
| (1) Male Pipe Thread | (6) Grips - Steel |
| (2) Mandrel - Steel | (7) Sealing Ring |
| (3) Nut - Steel | (8) Vent Tube - Std. Pipe Cut to Length |
| (4) Washer - Steel | (9) Street Ell |
| (5) O-Ring | (10) Pipe Thread in Mandrel |
| | (11) Studs & Nuts |