



Th. WORTELBOER B.V.

P.O BOX 5 - NL - 6580 AA MALDEN

HOLLAND

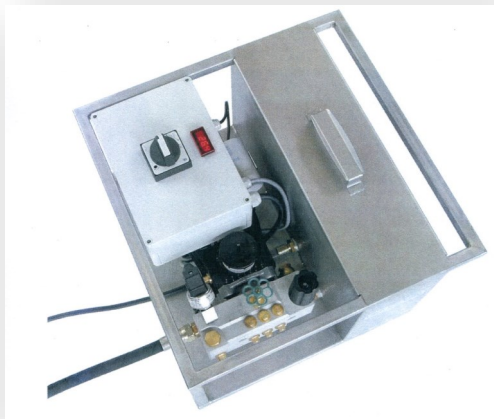
PHONE 31 - 24 - 358 65 14

FAX 31 - 24 - 358 70 79

www.wortelboer.ws

E-mail : info@wortelboer.ws

ELECTRIC DRIVEN HIGH PRESSURE PUMPS



Model 50/10 Digital

This stepless adjustable 3-step piston pump can be used for all testing pressures from 0 resp. 2 Bar. Through the high flow, is the pump also usable for larger vessels / exchangers as well as pipeline systems. This pump is standard executed with an adjustable over-pressure relief valve. A 1/2" connection, for e.g. a recorder, is included. Protection-frame and watertank are made of Stainless Steel.

Event. options:

- automatic filling
- protection against dry-running
- adjustable manometer with shutdown
- wheelset for making the pump mobile of pumps with tank of 50 ltr.

DIGITAL executions has extra:

Digital manometer and programmable, automatic shutdown when reaching of the adjusted test-pressure.



Model 120/11 and 230/6

Type	MP-50/10	MP-120/11	MP-230/6
Flow	10 Ltr. / min.	11 Ltr. / min.	6 Ltr. / min.
Max. test pressure	0 - 50 Bar	2 - 120 Bar	2 - 230 Bar
Manometer	Ø 100 mm. till 60 Bar	Ø 100 mm. till 160 Bar	Ø 100 mm. till 250 Bar
Pressure hose	900 bar - L=3 mtr.	900 bar - L=3 mtr.	900 bar - L=3 mtr.
Max. watertemperature	60° C	60° C	60° C
Tank volume	20 Ltr.	50 Ltr.	50 Ltr.
Dimensions	50 x 50 x 30 cms.	60 x 72 x 38 cms.	60 x 72 x 38 cms.
Motor	1,6 kW - 230V	2,2 kW - 230V	2,2 kW - 230V
Weight	31 Kgs.	50 Kgs.	50 Kgs.