



**Th. WORTELBOER B.V.**

SLUISWEG 9 - NL - 6582 AG HEUMEN

POSTBUS 5 - NL - 6580 AA MALDEN

TEL. 024 - 358 65 14

FAX 024 - 358 70 79

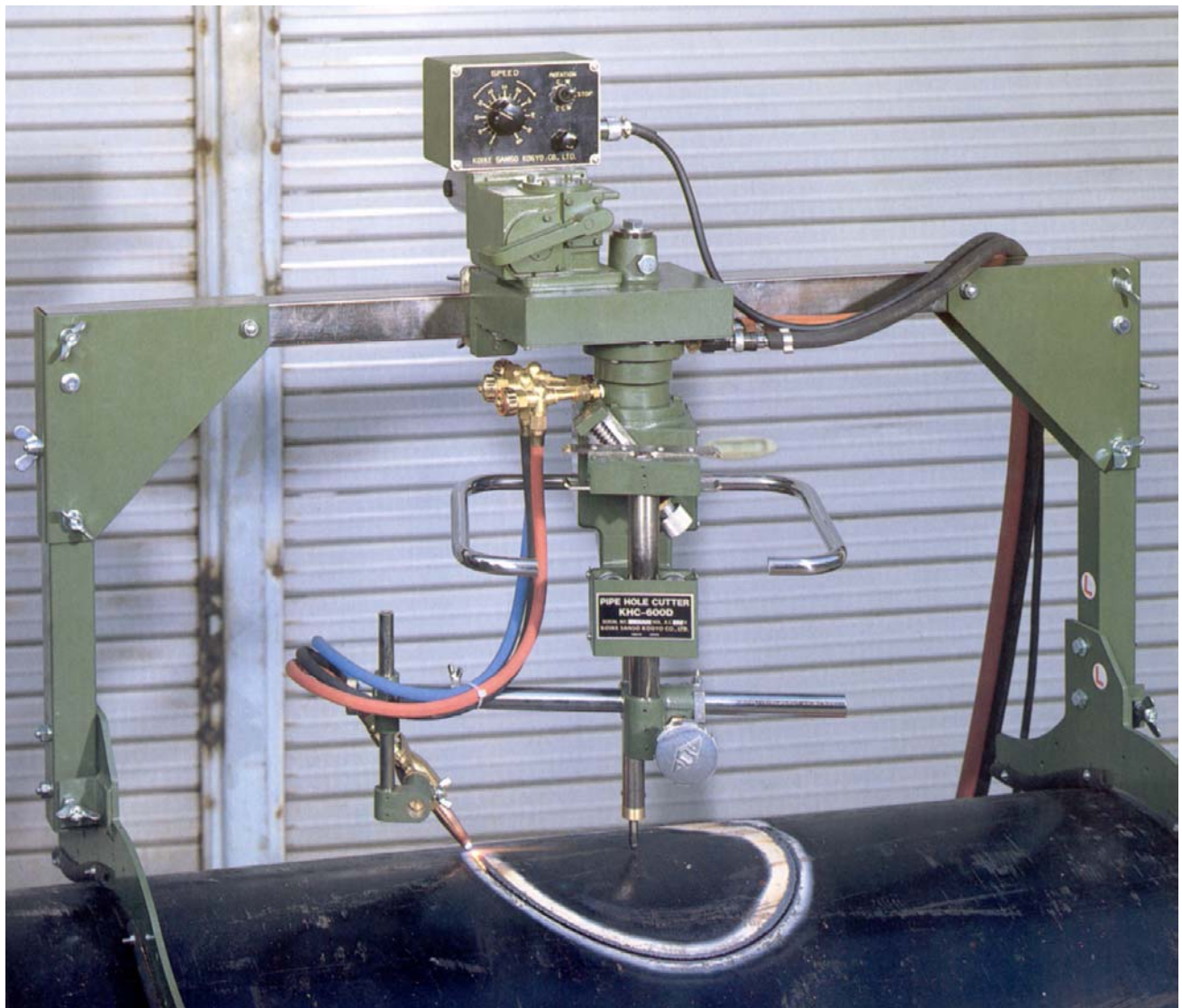
[www.wortelboer.ws](http://www.wortelboer.ws)

E-mail : [info@wortelboer.ws](mailto:info@wortelboer.ws)

## PORTABLE AUTOMATIC PIPE HOLE CUTTING MACHINE

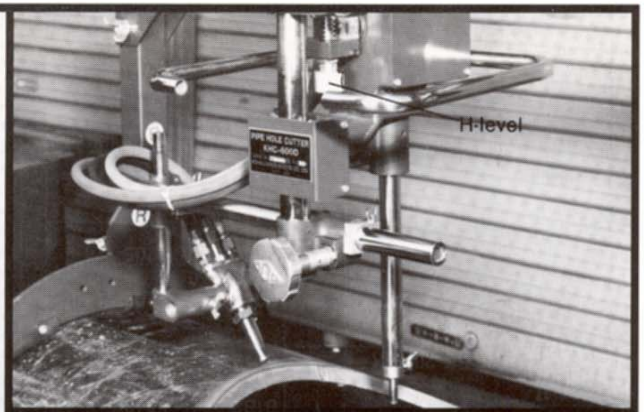
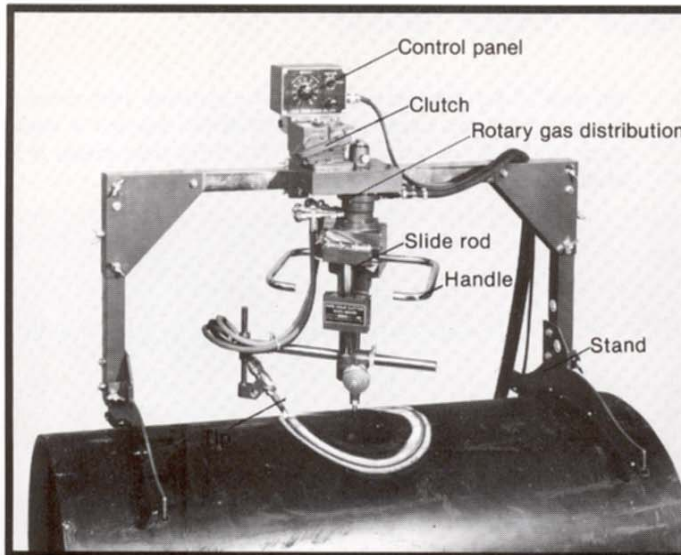
# KHC-600D

A unique machine developed through Advanced Technology and world wide experience. The KHC-600D features compact design, light weight and operating ease. Its main use is for high precision cutting of T-joint circles. Holes which cross the side of the pipe for pipe for piping systems, high pressure vessels and heat exchangers. KHC-600D can cut a vessel from the inside or outside. The KHC-600D user bonus is its ability to cut circles and bevel in flat plate. There is also a KHC-600D machine with a high speed motor for plasma cutting.



# PORTABLE AUTOMATIC PIPE HOLE CUTTING MACHINE

## KHC-600D



### H-LEVEL HANDLE

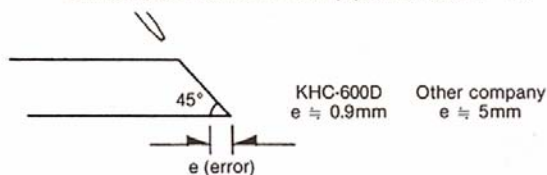
The torch automatically goes upward and downward along surface R by adjusting the tip height at 0° (upper position of the pipe) and 90° (pipe side), using the H-lever.

### FEATURES

- (1) Use of the lever ensures easy setting of the tip height.
- (2) The clutch mechanism facilitates tip positioning.
- (3) The up/down interlock device employs a trigonometrical function generating mechanism to ensure higher bevel accuracy than the conventional crank mechanism.

(Example) Bevel: 45°

$$\text{Branch pipe diameter/main pipe diameter} = 1/3$$



- (4) Use of rotary gas distribution prevents the hose from becoming entangled.
- (5) Circular cutting on the plane is also possible.
- (6) Excellent portability is guaranteed by compact design and light weight.

### MAIN SPECIFICATIONS

Effective cutting diameter	φ80 ~ φ600mm (3-1/8 ~ 23")
Vertical torch stroke	0 ~ 100mm (0 ~ 4")
Cutting thickness	5 ~ 50mm (1/4 ~ 2")
Cutting speed	0.12 ~ 1.2 rpm
Bevel angle	0° ~ 45°
Ratio between branch and main pipe diameters	1:2 or more
Main pipe diameter	800mm or more (for standard stand)
Motor	15W, 5,000rpm DC shunt motor
Speed control	SCR control
Machine dimensions	760mm(high) x 1050mm(long) x 500mm (wide) (30 x 41 x 19")
Weight	26kg (57.2 lbs)

### OPTIONS

#### ● Small-diameter pipe fixture

This is to assist the function of the standard stand to firmly hold pipes with the a diameter from 250 to 800mm.

#### ● Stand for Overhanging Workpiece

This stand holds workpieces on one end when cutting the pipe close to the end position.