



**Th. WORTELBOER B.V.**

SLUISWEG 9  
NL - 6582 AG HEUMEN  
HOLLAND  
TEL. +31 - 24 - 358 65 14

[www.wortelboer.ws](http://www.wortelboer.ws)

E-mail : [info@wortelboer.ws](mailto:info@wortelboer.ws)

## **Exact PipeCut V1000 pipe cutting machine**

Cutting of **thin-walled** pipe Ø 75 mm (3") till Ø 1000 mm (40")



- for thin wall steel, stainless and aluminium • innovative design
  - safe square cutting • very fast and easy

The Exact PipeCut pipe cutting machine cuts pipe and duct nearly burr-free and straight. It's a new era for cutting of spiral duct.

Exact PipeCut V1000 offers ease of use and a huge size range for cutting spiral ducts. The finished ends are straight and ready to be connected.

As an option, we have special pipe supports for the V1000 that can hold spiral ducts from 3" – 40" (75mm-1000mm).

The chips cool down very fast and fall down close to the machine.  
Damage to the surroundings or the change for fire is minimal.  
Ergonomic and safety for the operator are optimal.

The weight of the Exact PipeCut V1000 is only 6 Kgs.

For

- heat exchanger manufacturing • offshore constructions
  - apparatus manufacture • equipment constructions
- shipbuilding • machine construction • pipeline construction

# Technical specifications



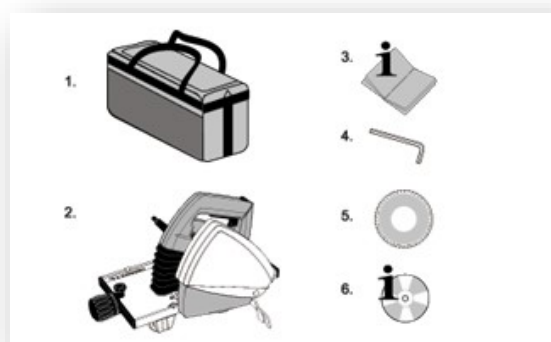
<b>Model</b>	<b>Exact PipeCut V1000</b>
<b>Range</b>	Ø 75 mm - 1000 mm
<b>Wall Thickness</b>	Wall 1.5 mm
	Seam 6 mm
<b>Power</b>	1010 W
<b>Voltage</b>	230 V / 50 Hz
<b>No Load speed</b>	4.000 RPM
<b>Weight</b>	6 Kgs



<b>Cutting Blade</b>	<b>CERMET cuttingblade</b>
<b>Diameter for model V1000</b>	Ø 155 mm
<b>Use</b>	thin wall steel, stainless and aluminium



The Exact Pipecut V1000 machine comes in a handy bag which carries a Cermet cutting blade, 1 Allen-key and an English manual.



The Exact Pipe Support Set V1000 can be purchased optionally and exists of:

3 fold-out roller supports in a separate handy bag.

