



**Th. WORTELBOER B.V.**

P.O BOX 5 - NL - 6580 AA MALDEN  
HOLLAND

PHONE 31 - 24 - 358 65 14

FAX 31 - 24 - 358 70 79

[www.wortelboer.ws](http://www.wortelboer.ws)

E-mail : [info@wortelboer.ws](mailto:info@wortelboer.ws)

## **KOHLE SHEET BEVELING MACHINES**

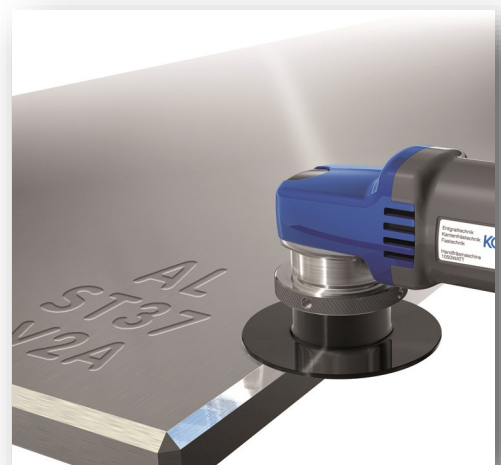
Handheld edge milling and deburring machines.



- Large application range • quick, safe and flexible
- for welding edges or deburring • easy to handle

With the Kohle edge milling machines different inside and outside contours can be milled and / or deburred, e.g. boreholes, flanges, sheet metal, pipes. Even visible surfaces in process plant engineering and welding seams can be prepared with these handy, yet powerful machines. Also radii are possible. Furthermore, sharp corners and edges can be safely deburred.

These machines have a wide application range. They can be used on steel, light metal, stainless steel, non-ferrous metal and plastic. Custom made cutter heads are available beside the standard 45°, 30° and 60° cutter head.



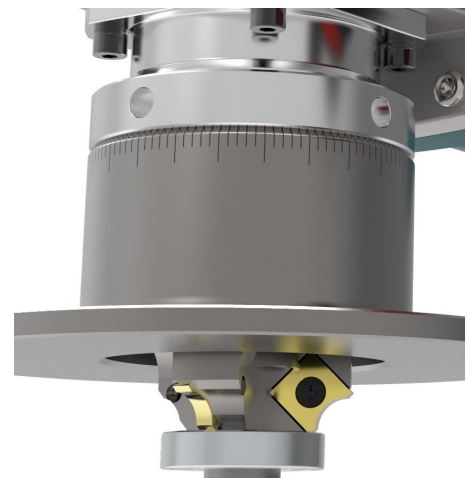
For

- heat exchanger manufacturing • offshore constructions
- Apparatus manufacture • equipment constructions
- shipbuilding • machine construction • pipeline construction

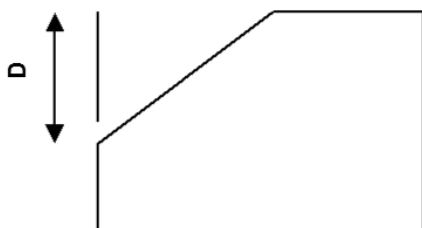
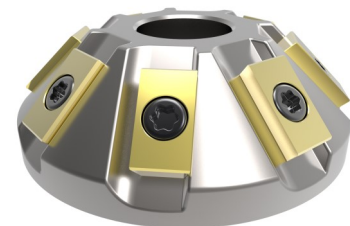
# Technical specifications Kohle series



Type	Kohle 2014 for 30°, 45° or 60°	Kohle 2014 for Radii 1-4	Kohle 2014 for radii 5-6
Power	1700 W	1700 W	1700 W
Motor	230 V electronically variable	230 V electronically variable	230 V electronically variable
RPM	2.800 - 11.500 RPM	2.800 - 11.500 RPM	2.800 - 11.500 RPM
Protection class	IP20	IP20	IP20
Weight	3,5 Kg	3,5 Kg	3,5 Kg
Maximum capacity (*)	8 mm / 30° (nr. 100006)	1 mm / R1 (nr. 110001)	5 mm / R5 (nr. 110005)
	5 mm / 45° (nr. 100004)	2 mm / R2 (nr. 110002)	6 mm / R6 (nr. 110006)
	4 mm / 60° (nr. 100005)	3 mm / R3 (nr. 110003)	
		4 mm / R4 (nr. 110004)	



Type	Kohle 2023 for 30°, 45° or 60°
Power	2600 W
Motor	230 V
RPM	6.600 RPM
Protection class	IP20
Weight	7,5 Kg
Maximum capacity (*)	14 mm / 30° (nr. 100016)
	10 mm / 45° (nr. 100017)
	7 mm / 60° (nr. 100015)



(\*) The maximum capacity can drop, depending on the hardness and toughness of the material.

This chart only gives a short overview of some Kohle machines. There is more information available about the many possibilities.